



**OWNER'S MANUAL
USO E MANUTENZIONE
MANUAL DEL PROPIETARIO**

**CBR600RR
CBR600RR ABS**

Honda CBR600RR/CBR600RR ABS

OWNER'S MANUAL

USO E MANUTENZIONE

MANUAL DEL PROPIETARIO

IMPORTANT INFORMATION

- **OPERATOR AND PASSENGER**

This motorcycle is designed to carry the operator and one passenger. Never exceed the maximum weight capacity as shown on the accessories and loading label.

- **ON-ROAD USE**

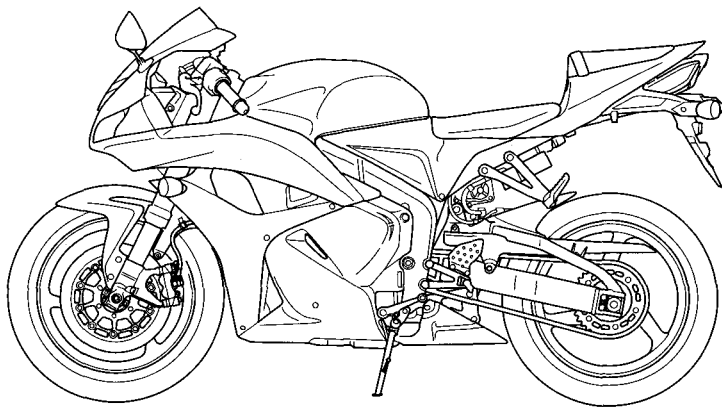
This motorcycle is designed to be used only on the road.

- **READ THIS OWNER'S MANUAL CAREFULLY**

Pay special attention to the safety messages that appear throughout the manual. These messages are fully explained in the "A Few Words About Safety" section which appears before the Contents page.

This manual should be considered a permanent part of the motorcycle and should remain with the motorcycle when resold.

Honda CBR600RR/ CBR600RR ABS OWNER'S MANUAL



All information in this publication is based on the latest production information available at the time of approval for printing. Honda Motor Co.,Ltd. reserves the right to make changes at any time without notice and without incurring any obligation.

No part of this publication may be reproduced without written permission.

WELCOME

The motorcycle presents you a challenge to master the machine, a challenge to adventure. You ride through the wind, linked to the road by a vehicle that responds to your commands as no other does. Unlike an automobile, there is no metal cage around you. Like an airplane, a pre-ride inspection and regular maintenance are essential to your safety. Your reward is freedom.

To meet the challenges safely, and to enjoy the adventure fully, you should become thoroughly familiar with this owner's manual BEFORE YOU RIDE THE MOTORCYCLE.

As you read this manual, you will find information that is preceded by a **NOTICE** symbol. This information is intended to help you avoid damage to your motorcycle, other property, or the environment.

When service is required, remember that your Honda dealer knows your motorcycle best. If you have the required mechanical "know-how" and tools, your dealer can supply you with an official Honda Shop Manual to help you perform many maintenance and repair tasks.

Pleasant riding, and thank you for choosing a Honda !

- The following codes in this manual indicate each country.
- The illustrations herein are based on the CBR600RR ABS ED type.

CBR600RR

E	UK	III E	(E Type III)
F	France Belgium	II F	(F Type II)
ED	European direct sales	II ED	(ED Type II)
U	Australia New Zealand	II U	(U Type II)
KO	Korea		
BR	Brazil		

CBR600RR ABS

E	UK
F	France Belgium
ED	European direct sales
U	Australia New Zealand
KO	Korea
BR	Brazil

- The specifications may vary with each locale.


A FEW WORDS ABOUT SAFETY

Your safety, and the safety of others, is very important. And operating this motorcycle safely is an important responsibility.

To help you make informed decisions about safety, we have provided operating procedures and other information on labels and in this manual. This information alerts you to potential hazards that could hurt you or others.

Of course, it is not practical or possible to warn you about all hazards associated with operating or maintaining a motorcycle. You must use your own good judgment.

You will find important safety information in a variety of forms, including:

- **Safety Labels** — on the motorcycle.
- **Safety Messages** — preceded by a safety alert symbol  and one of three signal words: **DANGER**, **WARNING**, or **CAUTION**.

These signal words mean:

▲ DANGER

You **WILL** be **KILLED** or **SERIOUSLY HURT** if you don't follow instructions.

▲ WARNING

You **CAN** be **KILLED** or **SERIOUSLY HURT** if you don't follow instructions.

▲ CAUTION

You **CAN** be **HURT** if you don't follow instructions.

- **Safety Headings** — such as Important Safety Reminders or Important Safety Precautions.
- **Safety Section** — such as Motorcycle Safety.
- **Instructions** — how to use this motorcycle correctly and safely.

This entire manual is filled with important safety information — please read it carefully.

OPERATION

page

1 MOTORCYCLE SAFETY

- 1 IMPORTANT SAFETY INFORMATION
- 2 PROTECTIVE APPAREL
- 4 LOAD LIMITS AND GUIDELINES
- 8 IMAGE LABELS

13 PARTS LOCATION

- 16 INSTRUMENTS AND INDICATORS

34 MAJOR COMPONENTS

(Information you need to operate this motorcycle)

- 34 SUSPENSION
- 40 BRAKES
- 43 CLUTCH
- 45 COOLANT
- 47 FUEL
- 50 ENGINE OIL
- 52 TUBELESS TYRES

page

58 ESSENTIAL INDIVIDUAL COMPONENTS

- 58 IGNITION SWITCH
- 59 KEYS
- 61 IMMOBILIZER SYSTEM (HISS)
- 65 RIGHT HANDLEBAR CONTROLS
- 66 LEFT HANDLEBAR CONTROLS
- 68 HESD (Honda Electronic Steering Damper)

page

69 FEATURES

(Not required for operation)

- 69 STEERING LOCK
- 70 SEAT
- 72 HELMET HOLDER
- 73 DOCUMENT BAG
- 74 STORAGE COMPARTMENT FOR
U-SHAPED ANTI-THEFT LOCK
- 75 LOWER COWL
- 76 MIDDLE COWL
- 77 HEADLIGHT AIM VERTICAL
ADJUSTMENT

page

78 OPERATION

- 78 PRE-RIDE INSPECTION
- 80 STARTING THE ENGINE
- 84 RUNNING-IN
- 85 RIDING
- 87 BRAKING
- 91 PARKING
- 92 ANTI-THEFT TIPS

MAINTENANCE

page

93 MAINTENANCE

- 93 THE IMPORTANCE OF MAINTENANCE
- 94 MAINTENANCE SAFETY
- 95 SAFETY PRECAUTIONS
- 96 MAINTENANCE SCHEDULE
- 99 TOOL KIT
- 100 SERIAL NUMBERS
- 101 COLOUR LABEL
< Except BR type >
- 102 ENGINE OIL
- 108 SPARK PLUGS
- 114 THROTTLE OPERATION
- 115 COOLANT
- 116 DRIVE CHAIN
- 122 DRIVE CHAIN SLIDER
- 123 FRONT AND REAR SUSPENSION INSPECTION
- 124 SIDE STAND
- 125 WHEEL REMOVAL
- 132 BRAKE PAD WEAR
- 134 BATTERY
- 136 FUSE REPLACEMENT

page

- 139 BRAKELIGHT SWITCH ADJUSTMENT
- 140 BULB REPLACEMENT

146 CLEANING

151 STORAGE GUIDE

- 151 STORAGE
- 153 REMOVAL FROM STORAGE

154 TAKING CARE OF THE UNEXPECTED

155 SPECIFICATIONS

160 CATALYTIC CONVERTER

MOTORCYCLE SAFETY

IMPORTANT SAFETY INFORMATION

Your motorcycle can provide many years of service and pleasure – if you take responsibility for your own safety and understand the challenges that you can meet on the road.

There is much that you can do to protect yourself when you ride. You'll find many helpful recommendations throughout this manual. Following are a few that we consider to be most important.

Always Wear a Helmet

It's a proven fact: helmets significantly reduce the number and severity of head injuries. So always wear an approved motorcycle helmet and make sure your passenger does the same. We also recommend that you wear eye protection, sturdy boots, gloves, and other protective gear (page 2).

Make Yourself Easy to See

Some drivers do not see motorcycles because they are not looking for them. To make yourself more visible, wear bright reflective clothing, position yourself so other drivers can see you, signal before turning or changing lanes, and use your horn when it will help others notice you.

Ride Within Your Limits

Pushing the limits is another major cause of motorcycle accidents. Never ride beyond your personal abilities or faster than conditions warrant. Remember that alcohol, drugs, fatigue and inattention can significantly reduce your ability to make good judgements and ride safely.

Don't Drink and Ride

Alcohol and riding don't mix. Even one drink can reduce your ability to respond to changing conditions, and your reaction time gets worse with every additional drink. So don't drink and ride, and don't let your friends drink and ride either.

Keep Your Bike in Safe Condition

For safe riding, it's important to inspect your motorcycle before every ride and perform all recommended maintenance. Never exceed load limits, and only use accessories that have been approved by Honda for this motorcycle. See page 4 for more details.

PROTECTIVE APPAREL

For your safety, we strongly recommend that you always wear an approved motorcycle helmet, eye protection, boots, gloves, trousers, and a long-sleeved shirt or jacket whenever you ride. Although complete protection is not possible, wearing proper gear can reduce the chance of injury when you ride.

Following are suggestions to help you choose proper gear.

⚠ WARNING

Not wearing a helmet increases the chance of serious injury or death in a crash.

Be sure you and your passenger always wear a helmet, eye protection and other protective apparel when you ride.

Helmets and Eye Protection

Your helmet is your most important piece of riding gear because it offers the best protection against head injuries. A helmet should fit your head comfortably and securely. A bright-coloured helmet can make you more noticeable in traffic, as can reflective strips.

An open-face helmet offers some protection, but a full-face helmet offers more. Always wear a face shield or goggles to protect your eyes and help your vision.

Additional Riding Gear

In addition to a helmet and eye protection, we also recommend:

- Sturdy boots with non-slip soles to help protect your feet and ankles.
- Leather gloves to keep your hands warm and help prevent blisters, cuts, burns and bruises.
- A motorcycle riding suit or jacket for comfort as well as protection. Bright-coloured and reflective clothing can help make you more noticeable in traffic. Be sure to avoid loose clothes that could get caught on any part of your motorcycle.

To avoid possible heat damage to your motorcycle or personal belongings, do not block or restrict air flow around the exhaust muffler with baggage or clothing.

LOAD LIMITS AND GUIDELINES

Your motorcycle has been designed to carry you and one passenger. When you carry a passenger, you may feel some difference during acceleration and braking. But so long as you keep your motorcycle well-maintained, with good tyres and brakes, you can safely carry loads within the given limits and guidelines.

However, exceeding the weight limit or carrying an unbalanced load can seriously affect your motorcycle's handling, braking and stability. Non-Honda accessories, improper modifications, and poor maintenance can also reduce your safety margin.

The following pages give more specific information on loading, accessories and modifications.

Loading

How much weight you put on your motorcycle, and how you load it, are important to your safety. Anytime you ride with a passenger or cargo you should be aware of the following information.

WARNING

Overloading or improper loading can cause a crash and you can be seriously hurt or killed.

Follow all load limits and other loading guidelines in this manual.

Load Limits

Following are the load limits for your motorcycle:

Maximum weight capacity:

180 kg (397 lb)

Includes the weight of the rider, passenger, all cargo and all accessories

Maximum cargo weight:

14 kg (31 lb)

The weight of added accessories will reduce the maximum cargo weight you can carry.

Loading Guidelines

Your motorcycle is primarily intended for transporting you and a passenger. You may wish to secure a jacket or other small items to the seat when you are not riding with a passenger.

If you wish to carry more cargo, check with your Honda dealer for advice, and be sure to read the information regarding accessories on page 6 .

Improperly loading your motorcycle can affect its stability and handling. Even if your motorcycle is properly loaded, you should ride at reduced speeds and never exceed 130 km/h (80 mph) when carrying cargo.

Follow these guidelines whenever you carry a passenger or cargo:

- Check that both tyres are properly inflated (page 52).
- If you change your normal load, you may need to adjust the front suspension (page 34) and the rear suspension (page 37).
- To prevent loose items from creating a hazard, make sure that all cargo is securely tied down before you ride away.
- Place cargo weight as close to the center of the motorcycle as possible.
- Balance cargo weight evenly on both sides.
- To avoid possible heat damage to your motorcycle or personal belongings, do not block or restrict air flow around the exhaust muffler with baggage or clothing.

Accessories and Modifications

Modifying your motorcycle or using non-Honda accessories can make your motorcycle unsafe. Before you consider making any modifications or adding an accessory, be sure to read the following information.

WARNING

Improper accessories or modifications can cause a crash in which you can be seriously hurt or killed.

Follow all instructions in this owner's manual regarding accessories and modifications.

Accessories

We strongly recommend that you use only Honda Genuine Accessories that have been specifically designed and tested for your motorcycle. Because Honda cannot test all other accessories, you must be personally responsible for proper selection, installation and use of non-Honda accessories. Check with your dealer for assistance and always follow these guidelines:

- Make sure the accessory does not obscure any lights, reduce ground clearance and banking angle, limit suspension travel or steering travel, alter your riding position or interfere with operating any controls.
- Be sure electrical equipment does not exceed the motorcycle's electrical system capacity (page 159). A blown fuse can cause a loss of lights or engine power.

- Do not pull a trailer or sidecar with your motorcycle. This motorcycle was not designed for these attachments, and their use can seriously impair your motorcycle's handling.

Modifications

We strongly advise you not to remove any original equipment or modify your motorcycle in any way that would change its design or operation. Such changes could seriously impair your motorcycle's handling, stability and braking, making it unsafe to ride.

Removing or modifying your lights, mufflers, emission control system or other equipment can also make your motorcycle illegal.

IMAGE LABELS

〈**Except BR type**〉

The following pages describe the label meanings. Some labels warn you of potential hazards that could cause serious injury. Others provide important safety information. Read this information carefully and don't remove the labels.

If a label comes off or becomes hard to read, contact your Honda dealer for a replacement.

There is a specific symbol on each label. The meanings of each symbol and label are as follows.



Read instructions contained in Owner's Manual carefully.



Read instructions contained in Shop Manual carefully.
In the interest of safety, take the motorcycle to be serviced only by a Honda dealer.



DANGER (with RED background)

You **WILL** be **KILLED** or **SERIOUSLY HURT** if you don't follow instructions.



WARNING (with ORANGE background)

You **CAN** be **KILLED** or **SERIOUSLY HURT** if you don't follow instructions.



CAUTION (with YELLOW background)

You **CAN** be **HURT** if you don't follow instructions.



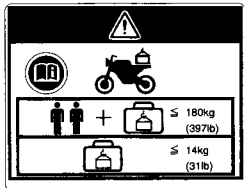
RADIATOR CAP LABEL

DANGER

NEVER OPEN WHEN HOT.

Hot coolant will scald you.

Relief pressure valve begins to open at 1.1 kgf/cm².

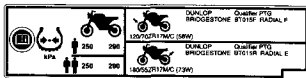


ACCESSORIES AND LOADING WARNING LABEL

WARNING

ACCESSORIES AND LOADING

- The safety stability and handling of this motorcycle may be affected by the addition of accessories and luggage.
- Read carefully the instructions contained in user's manual and installation guide before installing any accessory.
- The total weight of accessories and luggage added to rider's and passenger's weight should not exceed 180 kg (397 lb) , which is the maximum weight capacity.
- The luggage weight must not exceed 14 kg (31 lb) under any circumstances.
- The fitting of large fork-mounted or large handlebar-mounted fairing is not recommended.



TYRE INFORMATION LABEL

Cold tyre pressure:

[Driver and passenger]

Front 250 kPa (2.50 kgf/cm², 36 psi)

Rear 290 kPa (2.90 kgf/cm², 42 psi)

[Driver only]

Front 250 kPa (2.50 kgf/cm², 36 psi)

Rear 290 kPa (2.90 kgf/cm², 42 psi)

Tyre size:

Front 120/70ZR17M/C (58W)

Rear 180/55ZR17M/C (73W)

Tyre brand: DUNLOP

Front Qualifier PTG

Rear Qualifier PTG

Tyre brand: BRIDGESTONE

Front BT015F RADIAL F

Rear BT015R RADIAL E

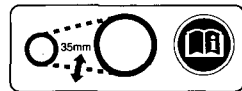
**REAR CUSHION LABEL****GAS FILLED**

Do not open.

Do not heat.

**SAFETY REMINDER LABEL**

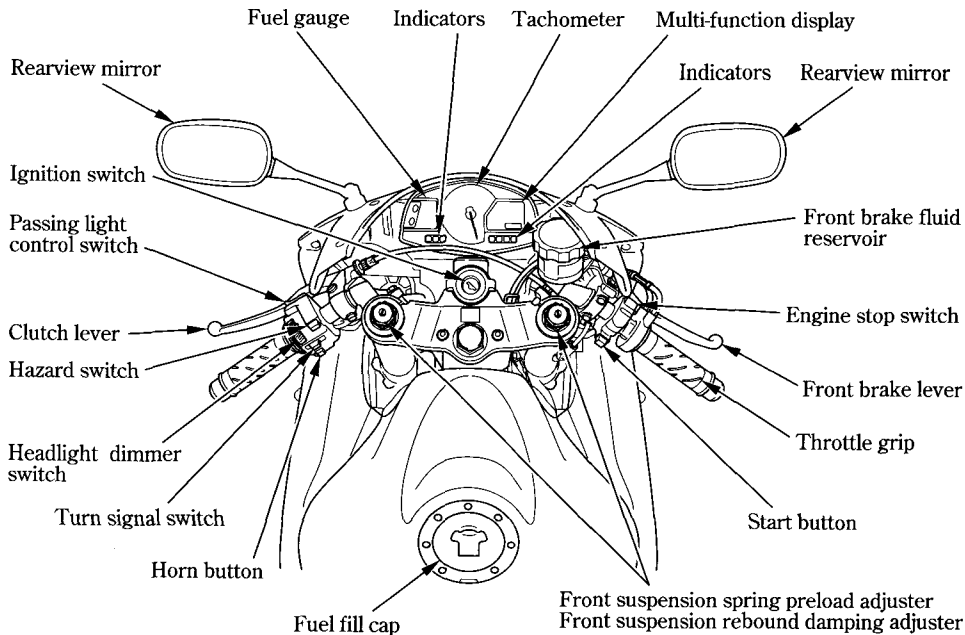
For your protection, always wear your helmet while riding.

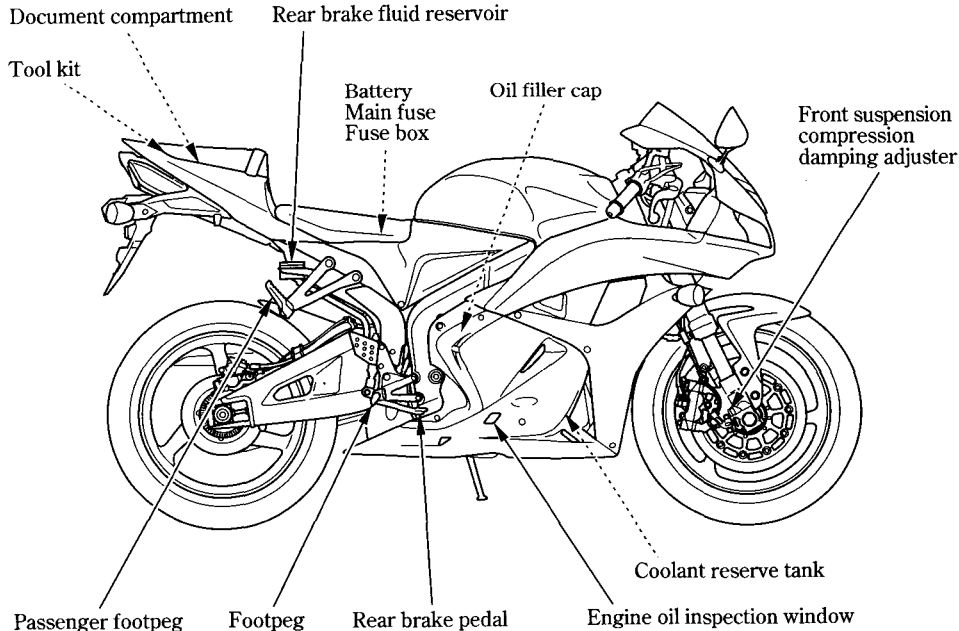
FUEL LABEL**UNLEAD FUEL ONLY****PREMIUM RECOMMENDED****DRIVE CHAIN LABEL**

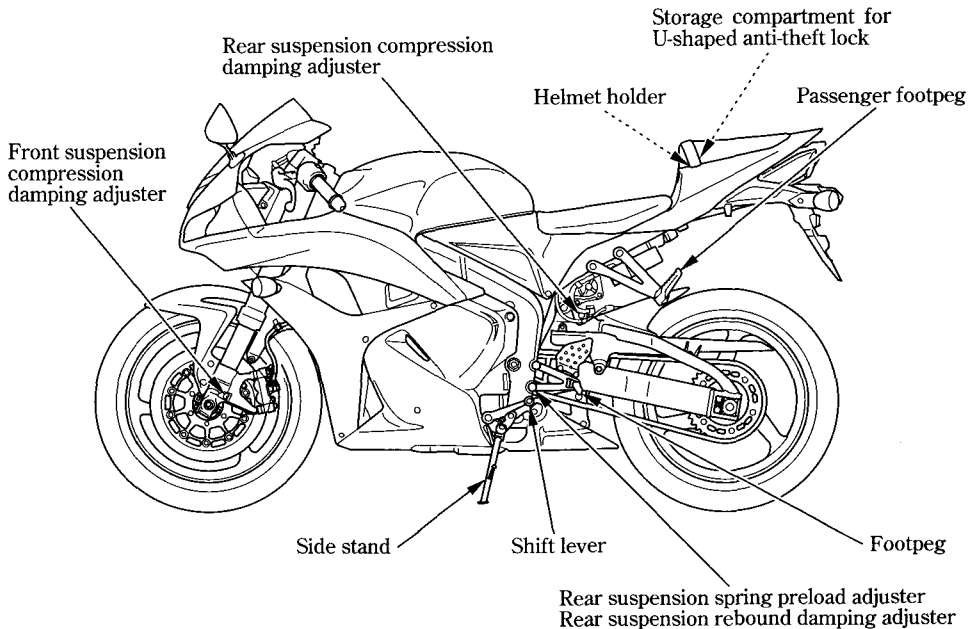
Keep chain adjusted and lubricated.

30 - 40 mm (1.2 - 1.6 in) Freeplay

PARTS LOCATION





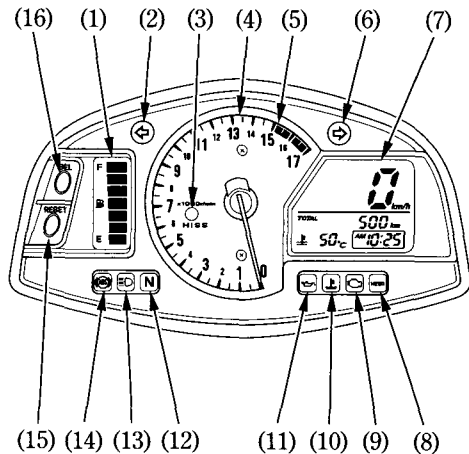


INSTRUMENTS AND INDICATORS

The indicators are contained in the instrument panel. Their functions are described in the tables on the following pages.

- (1) Fuel gauge
- (2) Left turn signal indicator
- (3) Immobilizer system (HISS) indicator
- (4) Tachometer
- (5) Tachometer red zone
- (6) Right turn signal indicator
- (7) Multi-function display
- (8) HESD indicator
- (9) PGM-FI malfunction indicator lamp (MIL)
- (10) High coolant temperature indicator
- (11) Low oil pressure indicator
- (12) Neutral indicator
- (13) High beam indicator
- (14) Combined ABS indicator (CBR600RR ABS)

- (15) RESET button
- (16) SEL button



(Ref.No.) Description	Function
(1) Fuel gauge	Shows approximate fuel supply available (page 25). This gauge shows the initial display (page 24).
(2) Left turn signal indicator (green)	Flashes when the left turn signal operates. Should light for a few seconds and then go off when the ignition switch is turned ON.
(3) Immobilizer system (HISS) indicator (red)	<p>This indicator lights for a few seconds when the ignition switch is turned ON and the engine stop switch is at \odot (RUN). It will then go off if the properly-coded key has been inserted. If an improperly-coded key has been inserted, the indicator will remain on and the engine will not start (page 61).</p> <p>When the blinking function of this indicator is valid and the ignition switch is OFF, it keeps blinking for 24 hours (page 62).</p>

(Ref.No.) Description	Function
(4) Tachometer	Shows engine revolutions per minute. The tachometer needle will swing to the maximum scale on the dial once when the ignition switch is turned ON.
(5) Tachometer red zone	<p>Never allow the tachometer needle to enter the red zone, even after the engine has been broken in.</p> <p>NOTICE</p> <p>Running the engine beyond recommended maximum engine speed (the beginning of the tachometer red zone) can damage the engine.</p>
(6) Right turn signal indicator (green)	Flashes when the right turn signal operates. Should light for a few seconds and then go off when the ignition switch is turned ON.

(Ref.No.) Description	Function
(7) Multi-function display	The display includes the following functions; This display shows the initial display (page 24).
Speedometer	Shows riding speed (page 30).
Odometer	Shows accumulated mileage (page 30).
Tripmeter	Shows mileage per trip (page 30).
Digital clock	Shows hour and minute (page 32).
Coolant temperature meter	Shows coolant temperature (page 28).

(Ref.No.) Description	Function
(8) HESD indicator (red)	<p>Lights when there is any abnormality in the HESD (Honda Electronic Steering Damper). Should also go on for a few seconds and then go off when the ignition switch is turned ON and engine stop switch is at ○ (RUN).</p> <p>If it comes on at any other time, reduce speed and take the motorcycle to your Honda dealer as soon as possible (page 68).</p>
(9) PGM-FI malfunction indicator lamp (MIL) (amber)	<p>Lights when there is any abnormality in the PGM-FI (Programmed Fuel Injection) system. Should also light for a few seconds and then go off when the ignition switch is turned ON and engine stop switch is at ○ (RUN). If the indicator comes on at any other time, reduce speed and take the motorcycle to a Honda dealer as soon as possible.</p>