



**OWNER'S MANUAL
USO E MANUTENZIONE
MANUAL DEL PROPIETARIO**



**NSS250S
NSS250A**

Honda NSS250S/NSS250A

OWNER'S MANUAL

USO E MANUTENZIONE

MANUAL DEL PROPIETARIO

IMPORTANT INFORMATION

- **OPERATOR AND PASSENGER**

This scooter is designed to carry the operator and one passenger. Never exceed the maximum weight capacity as shown on the accessories and loading label.

- **ON-ROAD USE**

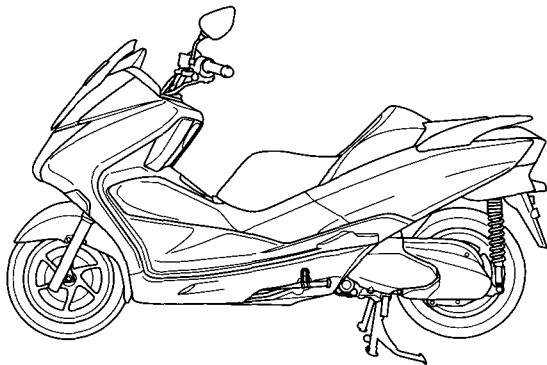
This scooter is designed to be used only on the road.

- **READ THIS OWNER'S MANUAL CAREFULLY**

Pay special attention to the safety messages that appear throughout the manual. These messages are fully explained in the "A Few Words About Safety" section which appears before the Contents page.

This manual should be considered a permanent part of the scooter and should remain with the scooter when resold.

Honda NSS250S/NSS250A OWNER'S MANUAL



All information in this publication is based on the latest production information available at the time of approval for printing. Honda Motor Co.,Ltd. reserves the right to make changes at any time without notice and without incurring any obligation.

No part of this publication may be reproduced without written permission.

WELCOME

The scooter presents you a challenge to master the machine, a challenge to adventure. You ride through the wind, linked to the road by a vehicle that responds to your commands as no other does. Unlike an automobile, there is no metal cage around you. Like an airplane, a pre-ride inspection and regular maintenance are essential to your safety. Your reward is freedom.

To meet the challenges safely, and to enjoy the adventure fully, you should become thoroughly familiar with this owner's manual **BEFORE YOU RIDE THE SCOOTER.**

As you read this manual, you will find information that is preceded by a **NOTICE** symbol. This information is intended to help you avoid damage to your scooter, other property, or the environment.

When service is required, remember that your Honda dealer knows your scooter best. If you have the required mechanical "know-how" and tools, your dealer can supply you with an Official Honda Shop Manual to help you perform many maintenance and repair tasks.

Pleasant riding, and thank you for choosing a Honda !

- The following codes in this manual indicate each country.
- The illustrations herein are based on the NSS250A type.

NSS250S

ED	(Europe)			
	Austria	Greece	Macedonia	Spain
	Belgium	Holland	Norway	Sweden
	Bulgaria	Hungary	Poland	Switzerland
	Croatia	Iceland	Portugal	Ukraine
	Czech	Israel	Romania	
	Denmark	Italy	Russia	
	Finland	Latvia	Slovakia	
	Germany	Luxembourg	Slovenia	

NSS250A

ED	(Europe)				F	France
	Austria	Greece	Macedonia	Spain		
	Belgium	Holland	Norway	Sweden		
	Bulgaria	Hungary	Poland	Switzerland		
	Croatia	Iceland	Portugal	Ukraine		
	Czech	Israel	Romania			
	Denmark	Italy	Russia			
	Finland	Latvia	Slovakia			
	Germany	Luxembourg	Slovenia			

- The specifications may vary with each locale.


A FEW WORDS ABOUT SAFETY

Your safety, and the safety of others, is very important. And operating this scooter safely is an important responsibility.

To help you make informed decisions about safety, we have provided operating procedures and other information on labels and in this manual. This information alerts you to potential hazards that could hurt you or others.

Of course, it is not practical or possible to warn you about all hazards associated with operating or maintaining a scooter. You must use your own good judgment.

You will find important safety information in a variety of forms, including:

- **Safety Labels** — on the scooter.
- **Safety Messages** — preceded by a safety alert symbol  and one of three signal words: **DANGER**, **WARNING**, or **CAUTION**.

These signal words mean:

⚠ DANGER

You **WILL** be **KILLED** or **SERIOUSLY HURT** if you don't follow instructions.

⚠ WARNING

You **CAN** be **KILLED** or **SERIOUSLY HURT** if you don't follow instructions.

⚠ CAUTION

You **CAN** be **HURT** if you don't follow instructions.

- **Safety Headings** — such as Important Safety Reminders or Important Safety Precautions.
- **Safety Section** — such as Scooter Safety.
- **Instructions** — how to use this scooter correctly and safely.

This entire manual is filled with important safety information — please read it carefully.

OPERATION

page

1 SCOOTER SAFETY

- 1 IMPORTANT SAFETY INFORMATION
- 2 PROTECTIVE APPAREL
- 5 LOAD LIMITS AND GUIDELINES

10 PARTS LOCATION

- 14 INSTRUMENTS AND INDICATORS

35 MAJOR COMPONENTS

(Information you need to operate this scooter)

- 35 SUSPENSION
- 36 BRAKES
- 41 COOLANT
- 43 FUEL
- 47 ENGINE OIL
- 48 TUBELESS TYRES

page

54 ESSENTIAL INDIVIDUAL COMPONENTS

- 54 HONDA SMART CARD KEY SYSTEM
- 77 IGNITION SWITCH
- 78 RIGHT HANDLEBAR CONTROLS
- 81 LEFT HANDLEBAR CONTROLS
- 83 HONDA S MATIC SYSTEM (NSS250A)

page

92 FEATURES

(Not required for operation)

92	STEERING LOCK
93	MECHANICAL KEY
95	PARKING BRAKE
96	SEAT
98	HELMET HOLDER
99	CENTER COMPARTMENT
101	DOCUMENT BAG
101	TRUNK LIGHT (NSS250A)
102	RIGHT CONSOLE BOX
104	LEFT CONSOLE BOX
106	REAR BODY LOWER COVER
107	FLOOR SIDE PANEL
108	BODY COVER
109	HEADLIGHT AIM VERTICAL ADJUSTMENT

page

110 OPERATION

110	PRE-RIDE INSPECTION
112	STARTING THE ENGINE
118	RUNNING-IN
119	RIDING
130	PARKING
131	ANTI-THEFT TIPS

MAINTENANCE

page

132 MAINTENANCE

- 132 THE IMPORTANCE OF MAINTENANCE
- 133 MAINTENANCE SAFETY
- 134 SAFETY PRECAUTIONS
- 135 MAINTENANCE SCHEDULE
- 138 TOOL KIT
- 139 SERIAL NUMBERS
- 140 COLOUR LABEL
- 141 AIR CLEANER
- 142 BELT CASE AIR CLEANER
- 145 CLIP
- 147 CRANKCASE BREATHER
- 148 ENGINE OIL
- 155 SPARK PLUG
- 158 THROTTLE OPERATION
- 159 COOLANT
- 160 FRONT AND REAR SUSPENSION INSPECTION
- 161 SIDE STAND
- 162 BRAKE PAD WEAR
- 164 BRAKE LOCK OPERATION
- 165 BATTERY

page

- 168 FUSE REPLACEMENT
- 171 BULB REPLACEMENT

179 CLEANING

184 STORAGE GUIDE

- 184 STORAGE
- 186 REMOVAL FROM STORAGE

187 SPECIFICATIONS

191 CATALYTIC CONVERTER

SCOOTER SAFETY

IMPORTANT SAFETY INFORMATION

Your scooter can provide many years of service and pleasure – if you take responsibility for your own safety and understand the challenges that you can meet on the road.

There is much that you can do to protect yourself when you ride. You'll find many helpful recommendations throughout this manual. Following are a few that we consider to be most important.

Always Wear a Helmet

It's a proven fact: helmets significantly reduce the number and severity of head injuries. So always wear an approved motorcycle helmet and make sure your passenger does the same. We also recommend that you wear eye protection, sturdy boots, gloves, and other protective gear (page 2).

Make Yourself Easy to See

Some drivers do not see scooters because they are not looking for them. To make yourself more visible, wear bright reflective clothing, position yourself so other drivers can see you, signal before turning or changing lanes, and use your horn when it will help others notice you.

Ride Within Your Limits

Pushing the limits is another major cause of scooter accidents. Never ride beyond your personal abilities or faster than conditions warrant. Remember that alcohol, drugs, fatigue and inattention can significantly reduce your ability to make good judgements and ride safely.

Don't Drink and Ride

Alcohol and riding don't mix. Even one drink can reduce your ability to respond to changing conditions, and your reaction time gets worse with every additional drink. So don't drink and ride, and don't let your friends drink and ride either.

Keep Your Bike in Safe Condition

For safe riding, it's important to inspect your scooter before every ride and perform all recommended maintenance. Never exceed load limits, and only use accessories that have been approved by Honda for this scooter. See page 5 for more details.

PROTECTIVE APPAREL

For your safety, we strongly recommend that you always wear an approved motorcycle helmet, eye protection, boots, gloves, long pants, and a long-sleeved shirt or jacket whenever you ride. Although complete protection is not possible, wearing proper gear can reduce the chance of injury when you ride.

Following are suggestions to help you choose proper gear.

WARNING

Not wearing a helmet increases the chance of serious injury or death in a crash.

Be sure you and your passenger always wear a helmet, eye protection and other protective apparel when you ride.

Helmets and Eye Protection

Your helmet is your most important piece of riding gear because it offers the best protection against head injuries. A helmet should fit your head comfortably and securely. A bright-coloured helmet can make you more noticeable in traffic, as can reflective strips.

An open-face helmet offers some protection, but a full-face helmet offers more. Always wear a face shield or goggles to protect your eyes and help your vision.

Additional Riding Gear

In addition to a helmet and eye protection, we also recommend:

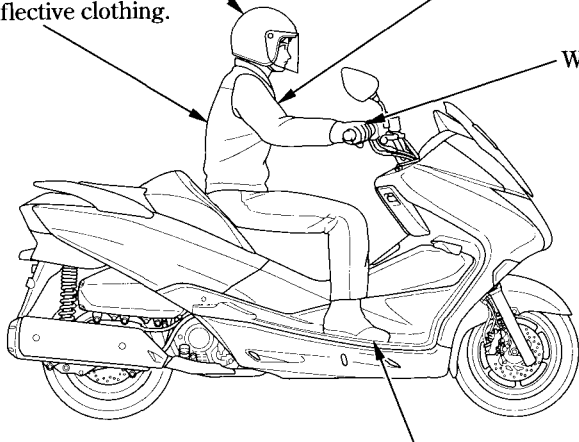
- Sturdy boots with non-slip soles to help protect your feet and ankles.
- Leather gloves to keep your hands warm and help prevent blisters, cuts, burns and bruises.
- A motorcycle riding suit or jacket for comfort as well as protection. Bright-colored and reflective clothing can help make you more noticeable in traffic. Be sure to avoid loose clothes that could get caught on any part of your scooter.

ALWAYS wear a helmet.
You should also wear a face shield or goggles.

Wear bright or reflective clothing.

Clothes should be close-fitting.

Wear gloves.



Shoes should be close-fitting, have low heels and offer ankle protection.

LOAD LIMITS AND GUIDELINES

Your scooter has been designed to carry you, one passenger and a limited amount of cargo. When you add cargo or carry a passenger, you may feel some difference during acceleration and braking. But so long as you keep your scooter well-maintained, with good tyres and brakes, you can safely carry loads within the given limits and guidelines.

However, exceeding the weight limit or carrying an unbalanced load can seriously affect your scooter's handling, braking and stability. Non-Honda accessories, improper modifications, and poor maintenance can also reduce your safety margin.

The following pages give more specific information on loading, accessories and modifications.

Loading

How much weight you put on your scooter, and how you load it, are important to your safety. Anytime you ride with a passenger or cargo you should be aware of the following information.

WARNING

Overloading or improper loading can cause a crash and you can be seriously hurt or killed.

Follow all load limits and other loading guidelines in this manual.

Load Limits

Following are the load limits for your scooter:

Maximum weight capacity:

180 kg (397 lbs)

Includes the weight of the rider, passenger, all cargo and all accessories

Maximum cargo weight:

19 kg (42 lbs)

The weight of added accessories will reduce the maximum cargo weight you can carry.

Putting too much weight in individual storage compartments can also affect stability and handling. So be sure to stay within the limits given below:

Maximum weight:

**in center compartment
in right and left console
boxes**

10 kg (22 lbs)

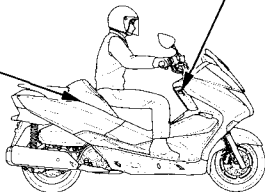
1.5 kg (3.3 lbs)

Right and left console boxes:
weight limit:

1.5 kg (3.3 lbs)

Center compartment:
weight limit:

10 kg (22 lbs)



Loading Guidelines

Your scooter is primarily intended for transporting you and a passenger.

If you wish to carry more cargo, check with your Honda dealer for advice, and be sure to read the information regarding accessories on page 8 .

Improperly loading your scooter can affect its stability and handling. Even if your scooter is properly loaded, you should ride at reduced speeds whenever carrying cargo.

Follow these guidelines whenever you carry a passenger or cargo:

- Check that both tyres are properly inflated (page 48).
- If you change your normal load, you may need to adjust the rear suspension (page 35).
- To prevent loose items from creating a hazard, make sure the center compartment, right and left console boxes are closed and that any other cargo is securely tied down before you ride away.
- Place cargo weight as close to the center of the scooter as possible.
- Balance cargo weight evenly on both sides.

Accessories and Modifications

Modifying your scooter or using non-Honda accessories can make your scooter unsafe. Before you consider making any modifications or adding an accessory, be sure to read the following information.

⚠ WARNING

Improper accessories or modifications can cause a crash in which you can be seriously hurt or killed.

Follow all instructions in this owner's manual regarding accessories and modifications.

Accessories

We strongly recommend that you use only Honda Genuine Accessories that have been specifically designed and tested for your scooter. Because Honda cannot test all other accessories, you must be personally responsible for proper selection, installation and use of non-Honda accessories. Check with your dealer for assistance and always follow these guidelines:

- Make sure the accessory does not obscure any lights, reduce ground clearance and banking angle, limit suspension travel or steering travel, alter your riding position or interfere with operating any controls.
- Be sure electrical equipment does not exceed the scooter's electrical system capacity (page 190). A blown fuse can cause a loss of lights or engine power.

- Do not pull a trailer or sidecar with your scooter. This scooter was not designed for these attachments, and their use can seriously impair your scooter's handling.

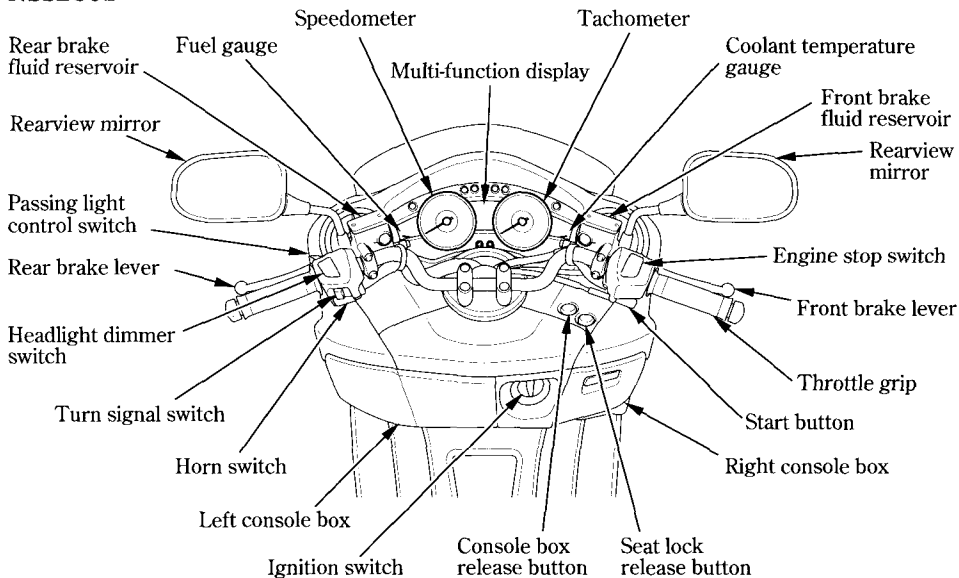
Modifications

We strongly advise you not to remove any original equipment or modify your scooter in any way that would change its design or operation. Such changes could seriously impair your scooter's handling, stability and braking, making it unsafe to ride.

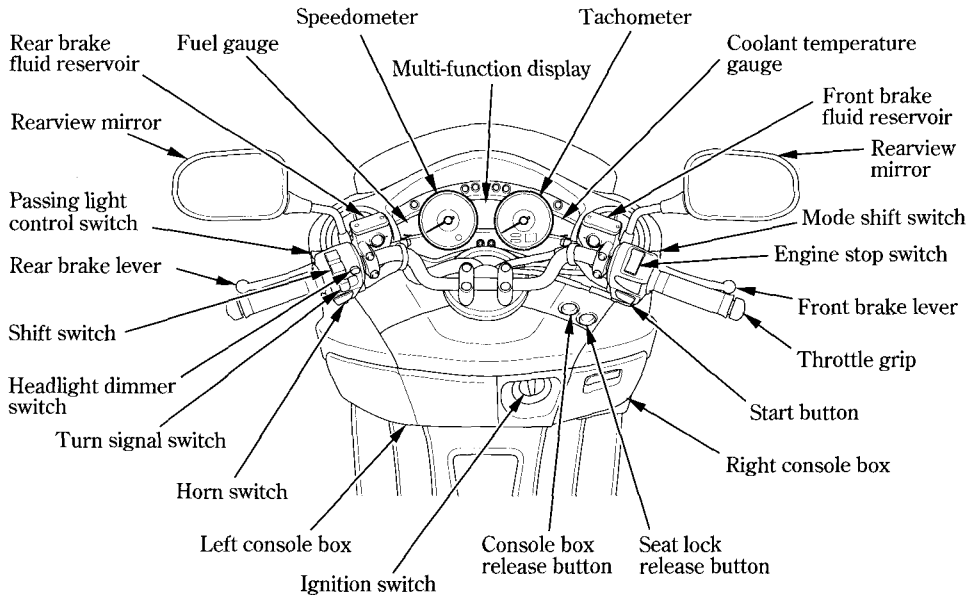
Removing or modifying your lights, mufflers, emission control system or other equipment can also make your scooter illegal.

PARTS LOCATION

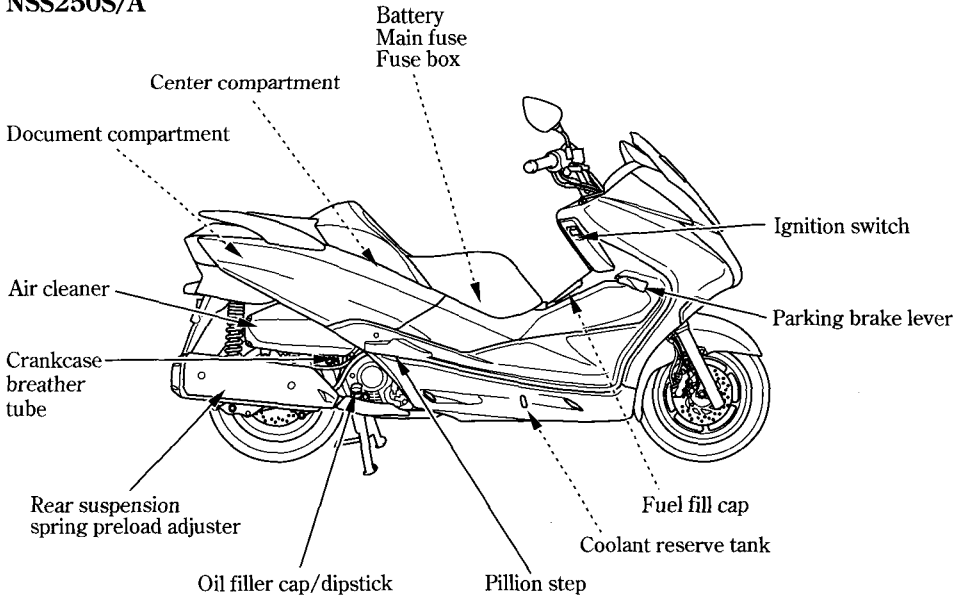
NSS250S



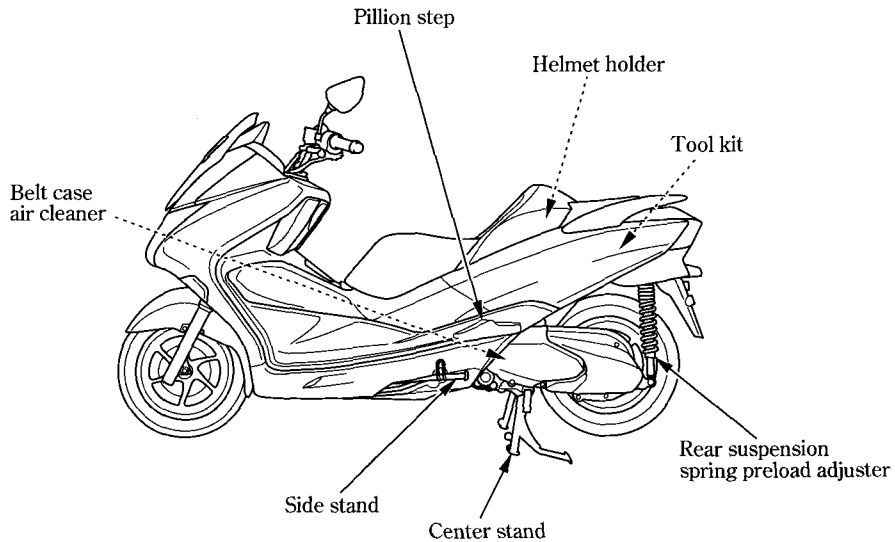
NSS250A



NSS250S/A



NSS250S/A

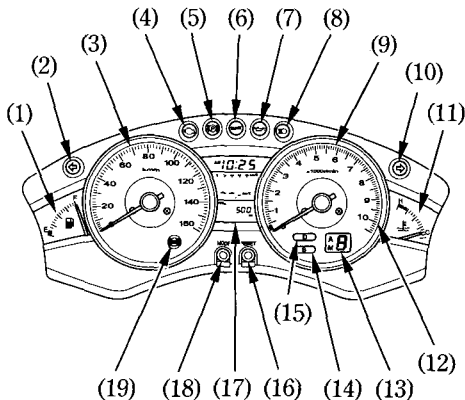



INSTRUMENTS AND INDICATORS

The indicators are contained in the instrument panel. Their functions are described in the tables on the following pages.

- (1) Fuel gauge
- (2) Left turn signal indicator
- (3) Speedometer
- (4) PGM-FI malfunction indicator lamp (MIL)
- (5) Parking brake indicator
- (6) Honda smart card key indicator
- (7) Low oil pressure indicator
- (8) High beam indicator
- (9) Tachometer
- (10) Right turn signal indicator
- (11) Coolant temperature gauge
- (12) Tachometer red zone
- (13) Shift information display (NSS250A)
- (14) S mode indicator (NSS250A)
- (15) D mode indicator (NSS250A)
- (16) RESET button
- (17) Multi-function display

- (18) Mode button
- (19) Anti-lock Brake System (ABS) indicator (NSS250A)



(Ref.No.) Description	Function
(1) Fuel gauge	Shows approximate fuel supply available (page 34). The fuel gauge needle will swing to the maximum scale on the dial once when the ignition switch is turned ON.
(2) Left turn signal indicator (green)	Flashes when the left turn signal operates.
(3) Speedometer	Shows riding speed. The speedometer needle will swing to the maximum scale on the dial once when the ignition switch is turned ON.
(4) PGM-FI malfunction indicator lamp (MIL) (amber)	Flashes when there is any abnormality in the PGM-FI (Programmed Fuel Injection) system. Should also light for a few seconds and then go off when the ignition switch is turned ON and engine stop switch is at  (RUN). If it comes on at any other time, reduce speed and take the scooter to your Honda dealer as soon as possible.

(Ref.No.) Description	Function
(5) Parking brake indicator (red)	It lights as a reminder that you have not released the parking brake.
(6) Honda smart card key indicator (amber)	<p>Push the ignition switch. When the ID is authenticated, the Honda smart card key indicator lights. When you turn the ignition switch ON, the Honda smart card key indicator will go off in 2 seconds when the engine stop switch is at ○ (RUN) (page 61).</p> <p>When the battery is low, the Honda smart card key indicator flashes 5 times when you turn the ignition switch ON (page 62).</p> <p>Flashes when the Honda smart card key has operating problems (page 62).</p>
(7) Low oil pressure indicator (red)	<p>Lights when the engine oil pressure is below normal operating range. Should light when ignition switch is ON and engine is not running. Should go out when the engine starts, except for occasional flickering at or near idling speed when engine is warm.</p> <p>NOTICE</p> <p>Running the engine with insufficient oil pressure may cause serious engine damage.</p>